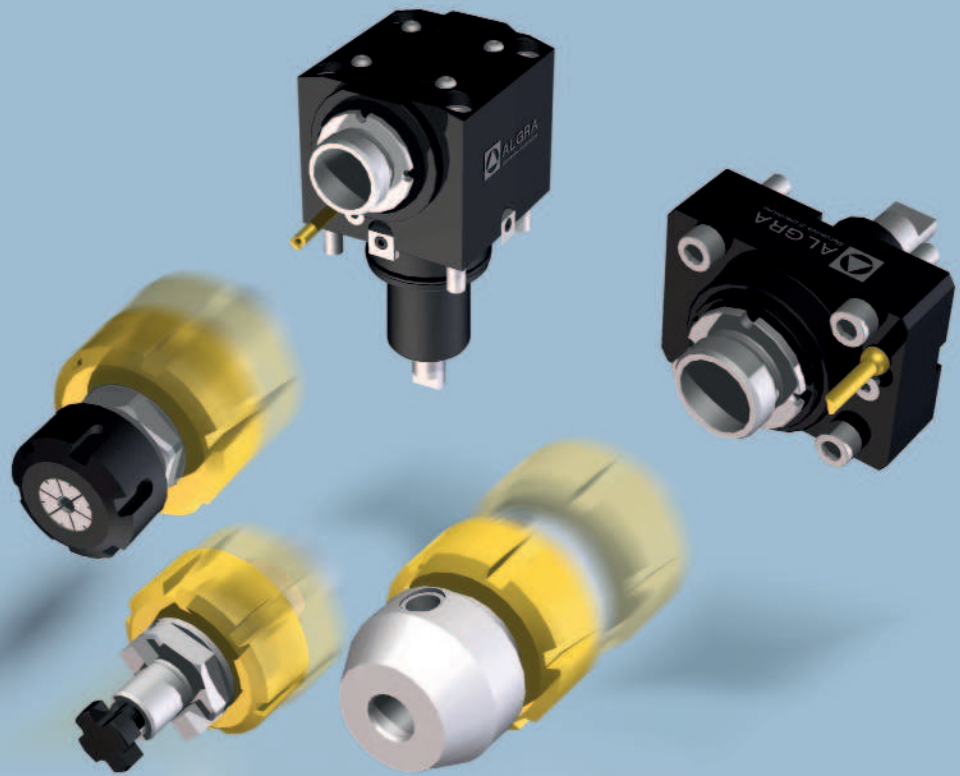


ACS

ACCESSORI
COMPONENTS
ACCESSOIRES
ZUBEHÖR



TEST RAPID



TEST RAPID

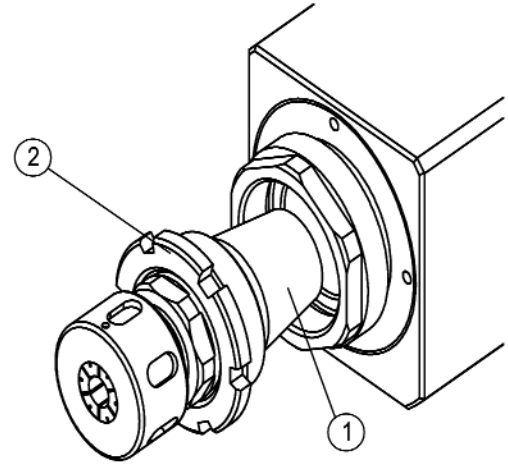
Montaggio
 Handling - Maniement - Handhabung

Preparare il rotante: togliere pinza e ghiera di serraggio
 - Introdurre l'adattatore (1)
 - Chiudere leggermente le viti di chiusura (2)

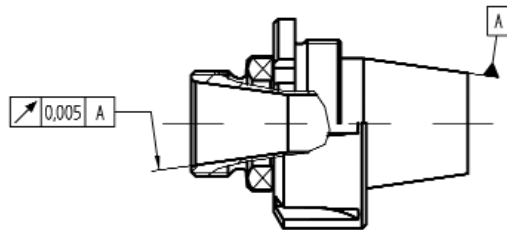
Preparing the spindle unit: Remove collet and clamping nut.
 - Adapter (1) einführen.
 - Spannmutter (2) anziehen.

Préparer l'unité broche: Pince de serrage et écrou de serrage enlever.
 - Introduire l'adaptateur (1).
 - Serrer légèrement le vis de serrage (2).

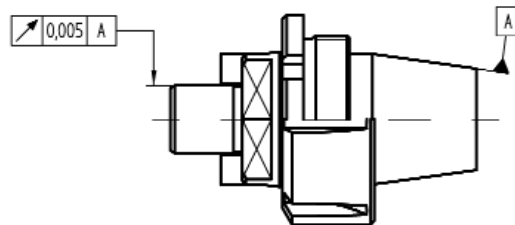
Vorbereiten des Spindelkopfes: Spannzange und Spannmutter entfernen.
 - Import adapter (1).
 - Tighten clamping nut (2).



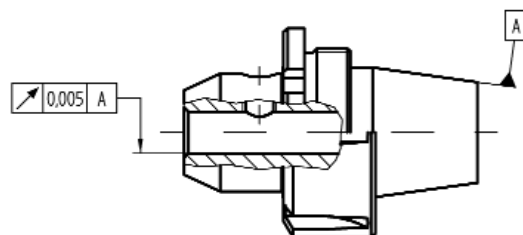
TEST RAPID

Caratteristiche tecniche: precisione e concentricità - Technische Merkmale: Rundlaufgenauigkeit
 Technical Information: true running accuracy - Technical characteristics: Précision de concentricité


- Portapinza
- Collet chuck
- Pince de serrage
- Spannzangenaufnahme

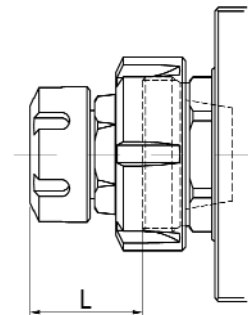
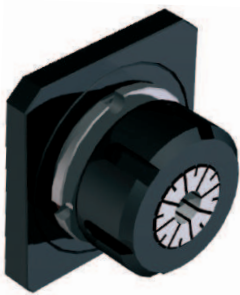


- Portafresa
- Shell end mill cutter
- Fraises enfichables
- Fräseraufnahme



- Mandrino di chiusura per codolo cilindrico
- Clamping chuck for round shaft dia
- Mandrin de serrage pour la queue cylindrique
- Spannfutter für Zylinderschäfte

TEST RAPID

Portapinze ghiera esterna
 Outer collet nut - Écrou de serrage extérieur - Außenliegende


ER PORTAUTENSILE Driven tools	Codice - code - code - Bestell Nr.	L mm	ER TEST RAPID
ER20	RTE ER20-ER16	31,0	ER16
	RTE ER20-ER20	35,0	ER20
ER25	RTE ER25-ER16	35,0	ER16
	RTE ER25-ER20	36,0	ER20
	RTE ER25-ER25	39,0	ER25
ER32	RTE ER32-ER16	36,0	ER16
	RTE ER32-ER20	37,5	ER20
	RTR ER32-ER25	44,0	ER25
	RTE ER32-ER32	44,0	ER32
ER40	RTE ER40-ER16	34,0	ER16
	RTE ER40-ER20	38,0	ER20
	RTE ER40-ER25	39,5	ER25
	RTE ER40-ER32	41,5	ER32
	RTE ER40-ER40	43,0	ER40



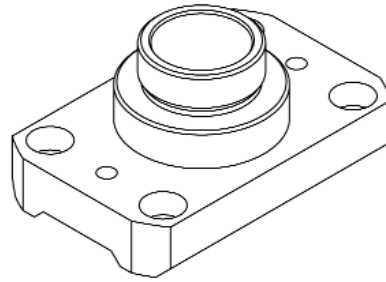
ER PORTAUTENSILE Driven tools	Codice - code - code - Bestell Nr.	L mm	∅ TEST RAPID
ER25	RTE ER25-PF16	34,0	DIN6358-16
ER32	RTE ER32-PF16	34,0	DIN6358-16
ER40	RTE ER40-PF16	35,0	DIN6358-16



ER PORTAUTENSILE Driven tools	Codice - code - code - Bestell Nr.	L mm	WELDON TEST RAPID
ER20	RTE ER20-PW10	37,0	DIN1835 - B10
ER25	RTE ER25-PW10	34,0	DIN1835 - B10
	RTE ER25-PW12	38,0	DIN1835 - B12
	RTE ER25-PW16	40,0	DIN1835 - B16
ER32	RTE ER32-PW10	38,5	DIN1835 - B10
	RTE ER32-PW12	41,0	DIN1835 - B12
	RTE ER32-PW16	46,5	DIN1835 - B16
	RTE ER32-PW20	50,0	DIN1835 - B20
ER40	RTE ER40-PW10	32,0	DIN1835 - B10
	RTE ER40-PW12	41,0	DIN1835 - B12
	RTE ER40-PW16	45,0	DIN1835 - B16
	RTE ER40-PW20	43,0	DIN1835 - B20
	RTE ER40-PW25	47,0	DIN1835 - B25



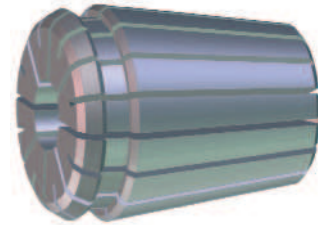
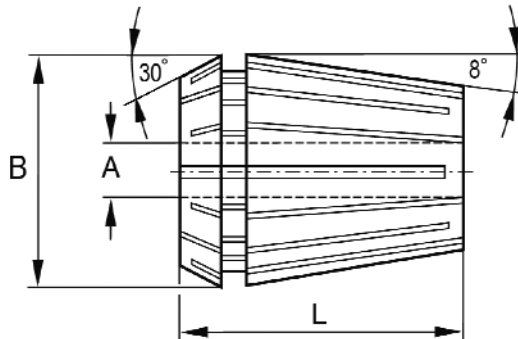
TEST RAPID

Accessori per presetting
Fitting device - Dispositif de montage - Montagevorrichtung

ER PORTAUTENSILE Driven tools	Codice - code - code - Bestell Nr.
ER20	RYE-ER20
ER25	RYE-ER25
ER32	RYE-ER32
ER40	RYE-ER40

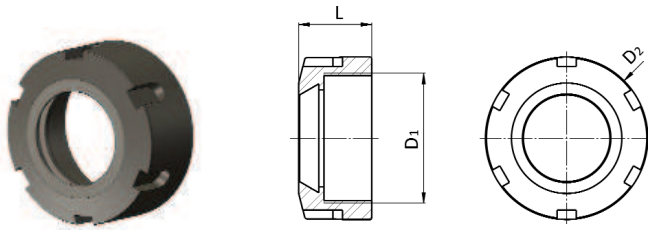
Accessori

Pinze di precisione autoestraibili secondo din 6499/b, tipo er/ex
 precision autoextractable collets to din 6499/b, type er/ex
 pinces de précision autoextraibles selon din 6499/b, type er/ex
 ausziehbare präzisionsspannzangen nach din 6499/b, typ er/ex



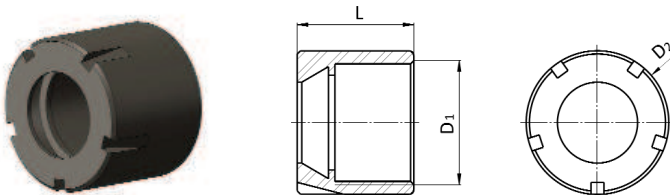
Codice - code - code - Bestell Nr.	A	B mm	L mm	Note - Notes - Notes - Bemerkungen
E4-1 16/*	1÷10	17	27	Ø A aumenta di 0,5 mm per Ø A da 1 a 3 mm. Aumenta di 1 mm per Ø A oltre 3 mm. La capacità di serraggio è pari all'incremento.
E4-1 20/*	1÷13	21	31	Ø A increases 0,5 mm for Ø A from 1 to 3 mm. It increases 1 mm for Ø A over 3 mm. Clamping capacity corresponds to diameter increase.
E4-1 25/*	1÷16	26	35	Ø A augmente 0,5 mm pour Ø A de 1 à 3 mm. Ø A augmente 1 mm pour A après 3 mm. La capacité de serrage correspond à l'augmentation.
E4-1 32/*	2,5÷20	33	40	Ø A steigt 0,5 mm für Ø A von 1 bis 3 mm. Er steigt 1 mm für A über 3 mm. Die Klemmungsfähigkeit entspricht der Zunahme.
E4-1 40/*	3÷26	41	49	Ø A aumenta 1 mm per volta. La capacità di serraggio è pari all'incremento. Ø A increases 1 mm every time. Clamping capacity corresponds to diameter increase. Ø A augmente 1 mm chaque fois. La capacité de serrage correspond à l'augmentation. Ø A steigt von 1 mm jedesmal. Die Klemmungsfähigkeit entspricht der Zunahme.

N.B.: Indicare sull'ordine il codice e il Ø A(*) Es.: E4-1 20/1,5
 When ordering please, give code and Ø A(*) Ex.: E4-1 20/1,5
 À la commande spécifier code et Ø A(*) Ex.: E4-1 20/1,5lm
 Bestellfalle Code und Ø A(*) angeben z.B.: E4-1 20/1,5



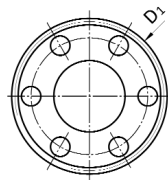
Ghiera Standard	Codice code - code - Bestell Nr.	D1	D2	L	ER
	RG16 QZ	M22x1,5	Ø32	17,5	16
	RG20 QZ	M25x1,5	Ø35	19	20
	RG25 QZ	M32x1,5	Ø42	20	25
	RG32 QZ	M40x1,5	Ø50	23	32
	RG40 QZ	M50x1,5	Ø63	25	40
	RG50 QZ	M64x2,0	Ø78	35,5	50

Chiave	Codice code - code - Bestell Nr.
	RE16 QZ
	RE20 QZ
	RE25 QZ
	RE32 QZ
	RE40 QZ
	RE50 QZ



Ghiera Mini	Codice code - code - Bestell Nr.	D1	D2	L	ER
	RG16 LZ	M19x1	Ø22	18	16
	RG20 LZ	M24x1	Ø28	19	20

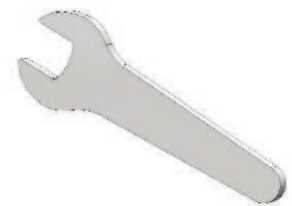
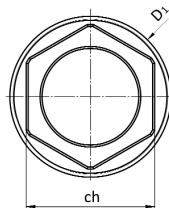
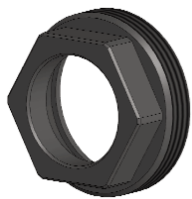
Chiave	Codice code - code - Bestell Nr.
	RE16 MZ
	RE20 MZ


Ghiera con fori frontali

Codice code - code - Bestell Nr.	D1	D2	L	ER
RG16 GZ	M24x1		8	16
RG20 GZ	M28x1,5		11	20
RG25 GZ	M32x1,5		12	25
RG32 GZ	M40x1,5		14	32

Chiave

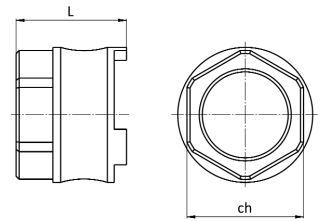
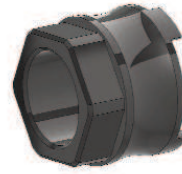
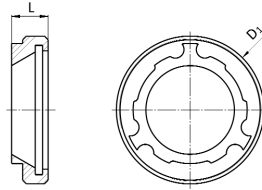
Codice code - code - Bestell Nr.
RE16 HZ
RE20 HZ
RE25 HZ
RE32 HZ


Ghiera esagonale

Codice code - code - Bestell Nr.	D1	ch	L	ER
RG16 CZ	M24x1	19	12	16
RG20 CZ	M28x1,5	22	13	20
RG25 CZ	M32x1,5	27	16,5	25
RG32 CZ	M40x1,5	32	19	32
RG40 CZ	M50x1,5	42	17	40

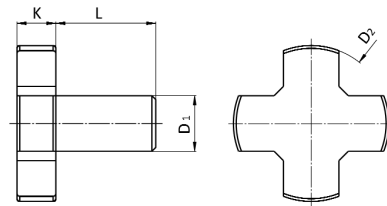
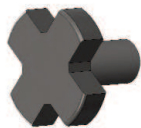
Chiave

Codice code - code - Bestell Nr.
RE16 DZ
RE20 DZ
RE25 DZ
RE32 DZ
RE40 DZ



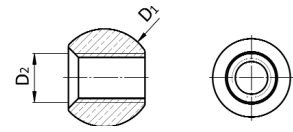
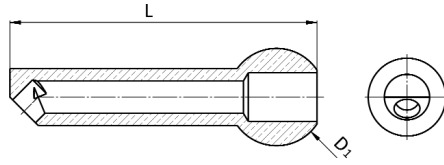
Ghiera a settori frontali	Codice code - code - Bestell Nr.	D1	D2	L	ER
	RG16 ZZ	M24x1		6,5	16
	RG20 ZZ	M28x1,5		6,5	20
	RG25 ZZ	M32x1,5		7	25
	RG32 ZZ	M40x1,5		7,5	32
	RG40 ZZ	M50x1,5		10	40

Avvitatore (compreso)	ch	L
	19	18
	22	19
	27	20
	30	21
	36	24



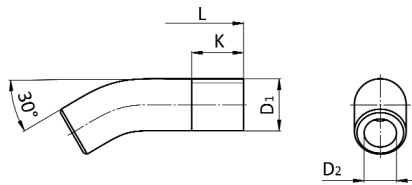
Vite di chiusura (DIN6367)	Codice code - code - Bestell Nr.	D1	D2	L	K
	RG16 XZ	M8	∅20	16	6
	RG22 XZ	M10	∅28	18	7
	RG27 XZ	M12	∅35	22	8

Chiave	Codice code - code - Bestell Nr.
	RE16 XZ
	RE22 XZ
	RE27 XZ



Ugello di refrigerazione	Codice code - code - Bestell Nr.	D1	D2	L	ER
	RZ12-18	Ø12		18	
	RZ12-38	Ø12		38	
	RZ12-49	Ø12		49	

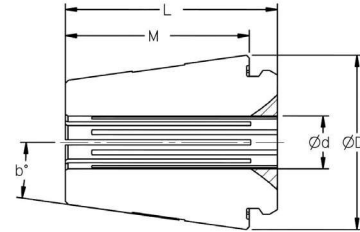
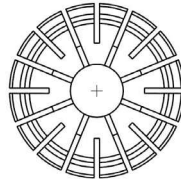
Ugello di refrigerazione	Codice code - code - Bestell Nr.	D1	D2
	Z3 30/40	Ø10	M5
	Z3 40/50	Ø12	M6



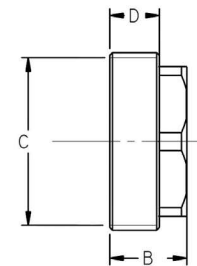
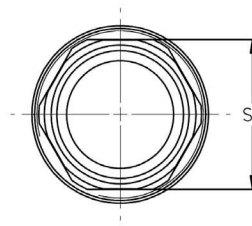
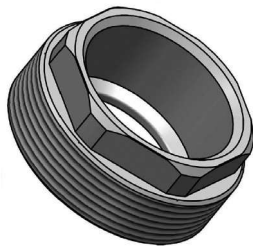
Kit n°12 prolunghe per ugello di refrigerazione	Codice code - code - Bestell Nr.	D1	D2	L	K
	Z1-5	M5	Ø3	25	5
	Z1-8	M8	Ø5	30	8

Pinze e Ghiera ETS

Prodotto esclusivo di TecnoPinz SA, brevettato a livello mondiale, combina la precisione derivata dal massimo accoppiamento con il cono mandrino ai benefici dell'elasticità ottimale, facendone un punto di riferimento per precisione e durata di vita. Totalmente compatibili con tutti i sistemi di portautensile tipo ER, le pinze e ghiera ETS offrono i migliori valori di concentricità sul mercato.

ETS COLLETS


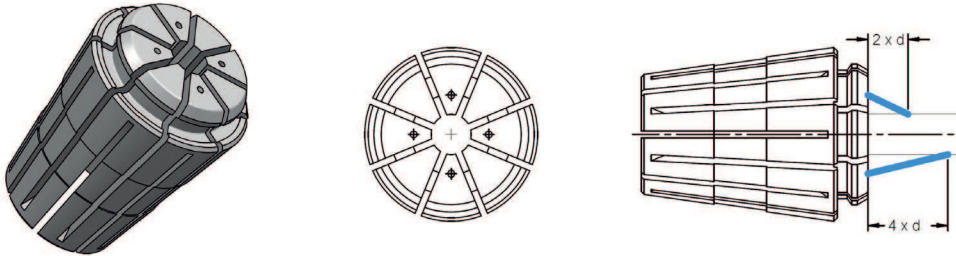
Tipo - Type - Typ	Ød	ØD	Diametro Serraggio Clamping Range Spann Bereich	L	M	b°
E4-1 ETS 16	1.25-2.50	16.40	0.25	24.00	21.00	8°
	3.00-4.00	16.70	0.50			
	5.00-10.00	17.00	1.00			
E4-1 ETS 20	1.00-2.50	20.40	0.25	30.50	26.70	8°
	3.00-4.00	20.70	0.50	30.50	26.70	
	5.00-12.00	21.10	1.00	30.50	26.70	
	13.00	21.10	1.00	27.50	23.70	
E4-1 ETS 25	1.00-2.50	25.30	0.25	34.00	29.40	8°
	3.00-4.00	25.70	0.50			
	5.00-16.00	26.10	1.0			
E4-1 ETS 32	1.50-3.00	32.40	0.50	40.00	34.70	8°
	4.00-20.00	33.10	1.00			

ETS-X NUTS


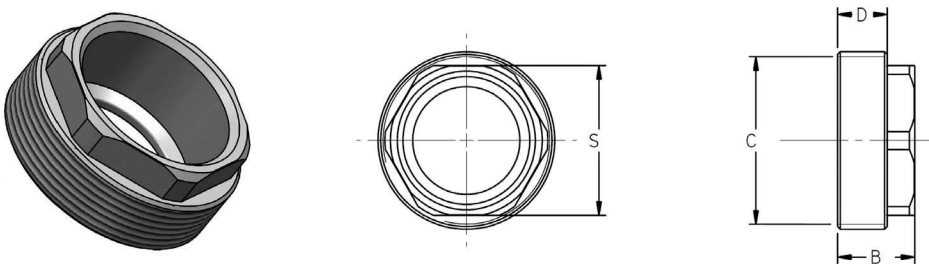
Tipo - Type - Typ	B	C	D	S		
RG ETS 16-X	12.00	M24X1.00	7.00	21		
RG ETS 20-X	13.00	M28X1.50	8.00	25		
RG ETS 25-X	14.00	M32X1.50	9.00	27		
RG ETS 32-X	15.00	M40X1.50	10.00	35		

Pinza ETS Spray

Questa versione offre le medesime caratteristiche e vantaggi della pinza ETS standard e, grazie a 4 fori passanti, garantisce inoltre l'irrorazione diretta del liquido di raffreddamento sull'utensile in lavorazione.

ETS SPRAY COLLETS


Tipo - Type - Typ	Ød	ØD	Diametro Serraggio Clamping Range Spann Bereich	L	M	b°
E4-1 ETS 12-S	3.00-7.00	11.40	0,25	17.00	14.20	8°
		11.70	0.50			
E4-1 ETS 14-S	1.25-2.50	14.35	0.25	20.50	17.50	8°
	3.00-8.00	14.55	0.50			
E4-1 ETS 16-S	1.25-2.50	16.40	0.25	24.00	21.00	8°
	3.00-4.00	16.70	0.50			
	5.00-10.00	17.00	1.00			
E4-1 ETS 20-S	1.00-2.50	20.40	0.25	30.50	26.70	8°
	3.00-4.00	20.70	0.50	30.50	26.70	
	5.00-12.00	21.10	1.00	30.50	26.70	
	13.00	21.10	1.00	27.50	23.70	
E4-1 ETS 25-S	1.00-2.50	25.30	0.25	34.00	29.40	8°
	3.00-4.00	25.70	0.50			
	5.00-16.00	26.10	1.00			
E4-1 ETS 32-S	1.50-3.00	32.40	0.50	40.00	34.70	8°
	4.00-20.00	33.10	1.00			
E4-1 ETS 40-S	4.00-26.00	41.10	1.00	45.00	39.60	8°

ETS-X NUTS


Tipo - Type - Typ	B	C	D	S		
RG ETS 16-X	12.00	M24X1.00	7.00	21		
RG ETS 20-X	13.00	M28X1.50	8.00	25		
RG ETS 25-X	14.00	M32X1.50	9.00	27		
RG ETS 32-X	15.00	M40X1.50	10.00	35		